

AMI5000 ETHERCAT® REMOTE PENDANT

Hand-held pendant with industry leading features for EtherCAT control systems

AT A GLANCE

- ▶ Portable machine control interface
- ▶ Seamless integration as easy as Plug and Play
- ▶ Industry leading EtherCAT® fieldbus
- ▶ Customisable button graphics
- ▶ Flexible mounting options with varying cable lengths
- ▶ Optional Hold to Run safety switch
- ▶ Dual channel Emergency Stop



High compatibility and reduced cabling complexity with **EtherCAT®**



STREAMLINED

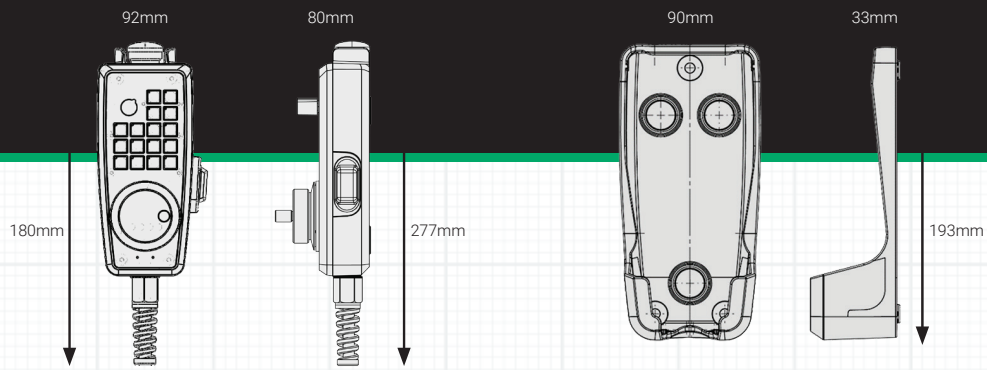
EtherCAT® connectivity reduces overall cable size and weight as well as being readily compatible with most modern control systems.

BUILT TO LAST

The durable plastic composite body is very resistant to impacts and environmental hazards, perfect for demanding applications.

IN YOUR HANDS

Design your own graphics and button functions for specialised applications. Add custom branding, colours and labels.



PENDANT

CRADLE

INTERACTION

- MPG hand wheel
- Feedrate control
- 16 control buttons

DURABLE

- Plastic composite casing
- Wear and drop resistant

COMMUNICATION

- 100Mbps
- EtherCAT® field bus
- RUN and ERROR status LEDs

CONNECTION

- 18 pin circular connector
- 24Vdc input
- Up to 10m cable

SPECIAL FEATURES

- Customisable branding
- Field upgradeable firmware
- Reduced cable diameter

SAFETY

- Dual channel Emergency Stop

STORAGE

- Magnetic cradle
- Machine mounted



SAFETY

- Dual channel Hold-To-Run



TOUCHPAD



PENDANT



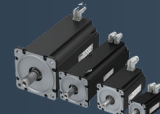
SOFTWARE



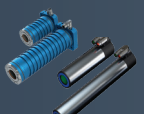
CNC



DRIVES



GAMMA MOTORS



LINX® MOTORS

ANCA
motion
Motion Control Solutions

